



PCMinder™ & Kitchen Minder 2™

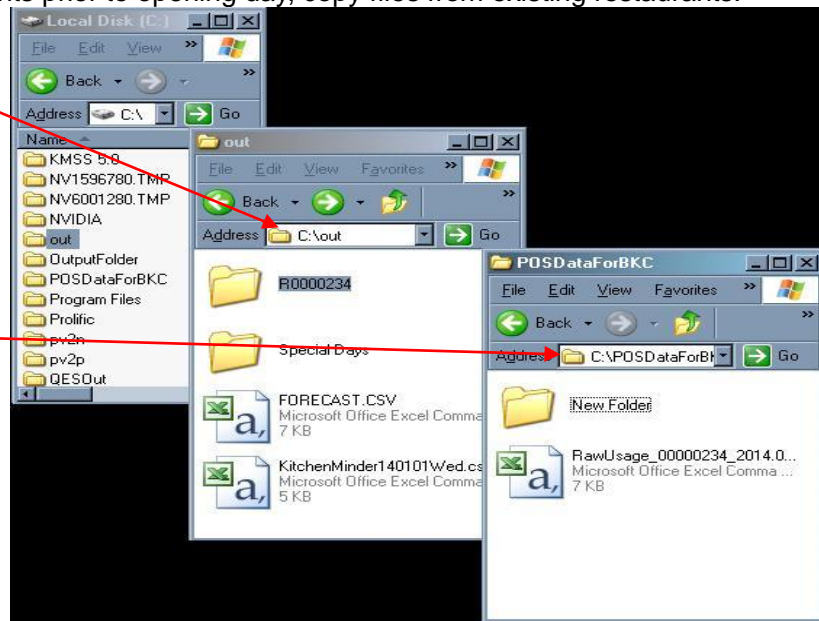
Installation Guide

The following Document is a step by step Guide to Installing and using PCMinder Software.

1. For setting up new restaurants prior to opening day, copy files from existing restaurants.

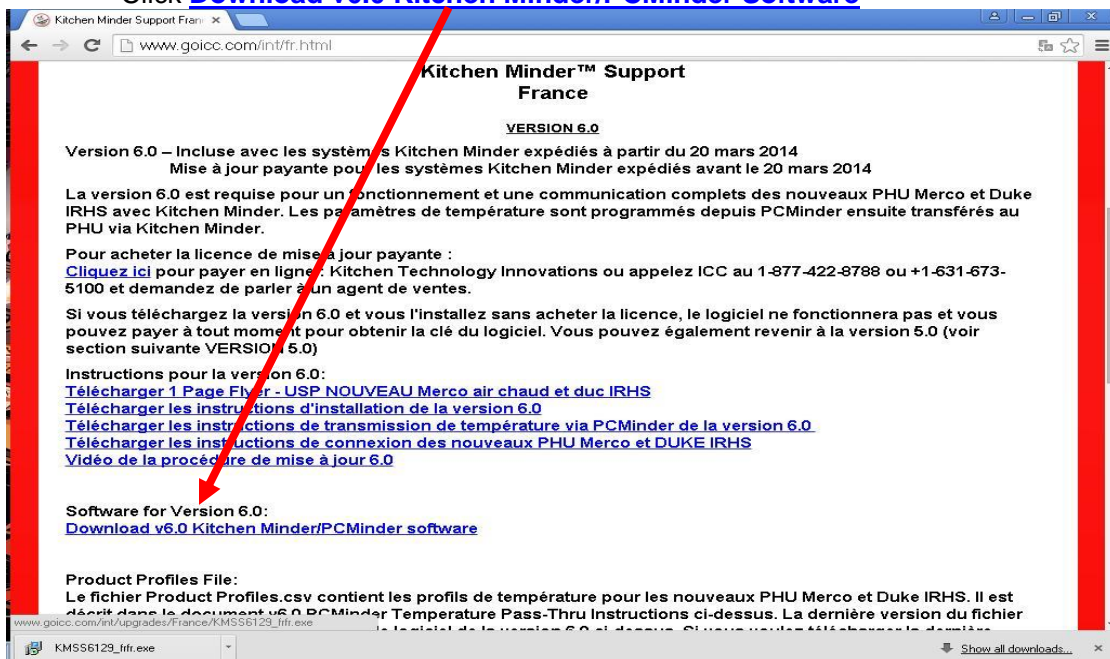
a) C:\out (Copy files
from Folder)

b) C:\POSDataforBKC
(Paste files to this Folder)



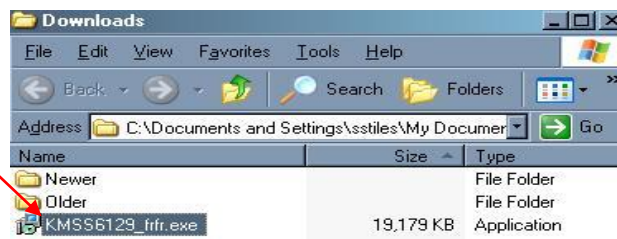
2. Download latest 6.0 KMSS Package from France support page <http://goicc.com/int/fr.html>

Click [Download v6.0 Kitchen Minder/PCMinder Software](#)

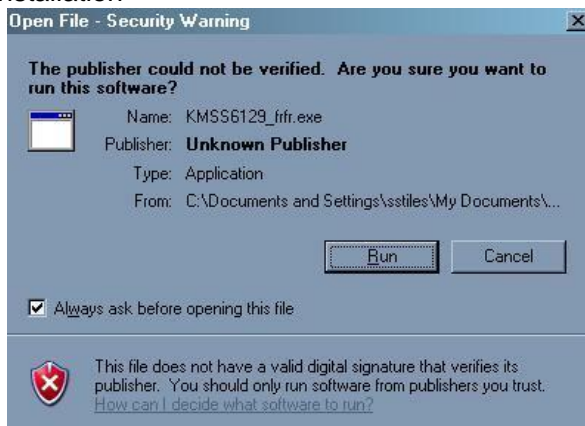


3. Run KMSS install Package

KMSS6129_frfr.exe



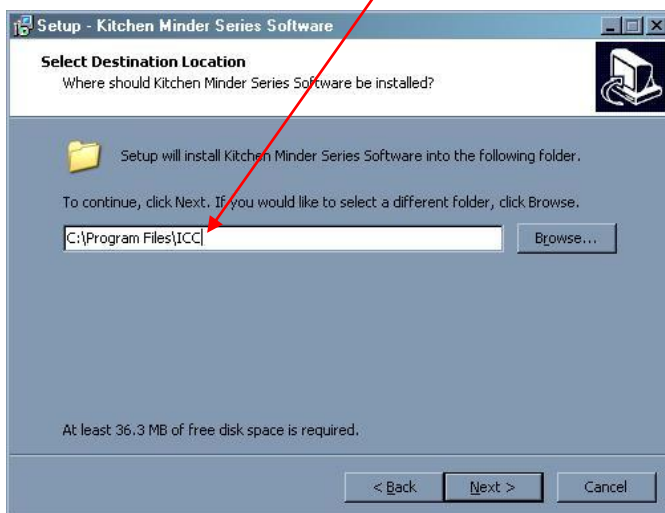
a) Run Installation



b) Click Next



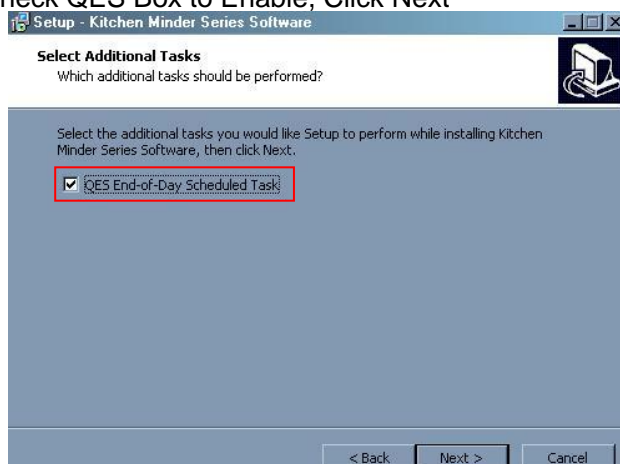
c) Make sure File Path is Correct



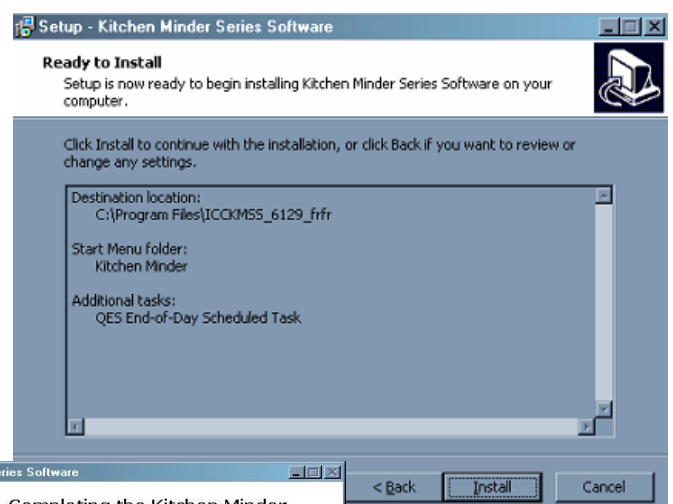
d) Click Next



e) Check QES Box to Enable, Click Next



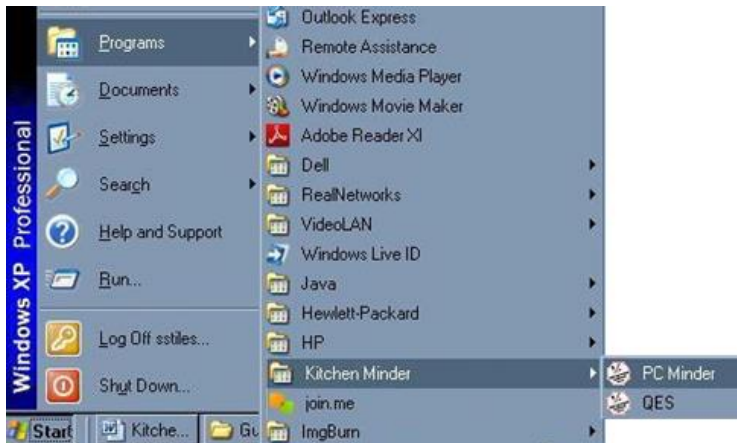
f) Click Install



After the Install Completes, then Click finish.

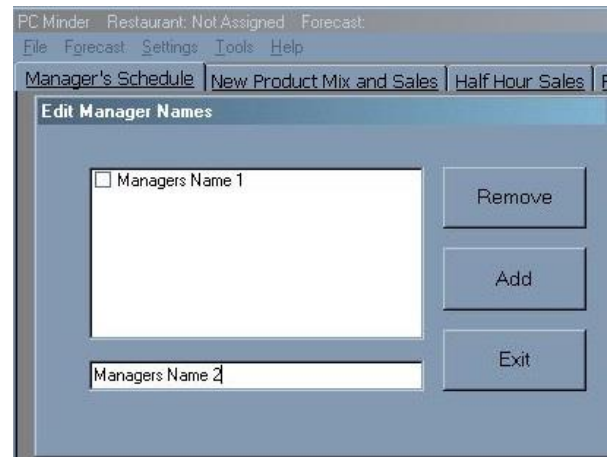


4. Run PCMinder

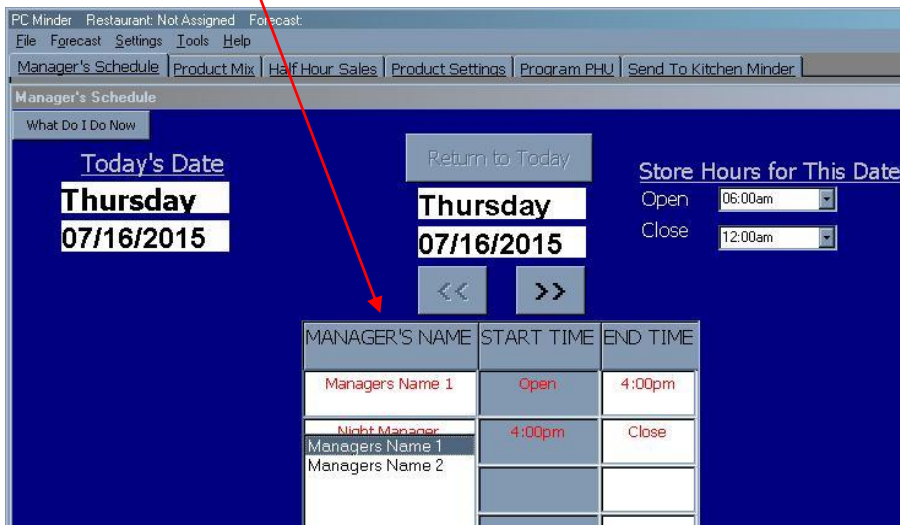


a) Enter at least 1 Manager Name.

You cannot continue without a Managers Name.

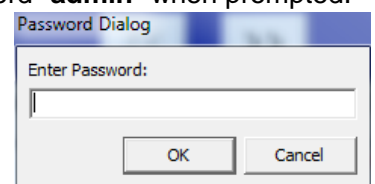


b) Assign Open/Close Manager (Click to Set Managers Names and Store Hours)



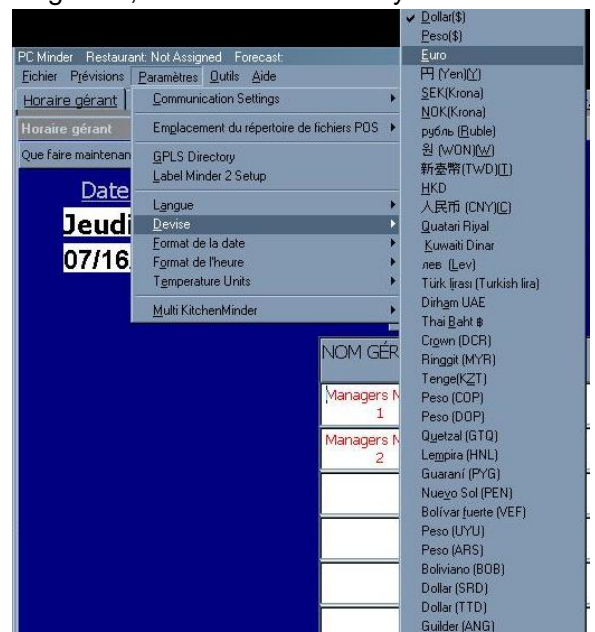
5. Change Language to French

Click the Settings Tab, then Select Language to Choose French. (Enter the Password "admin" when prompted.



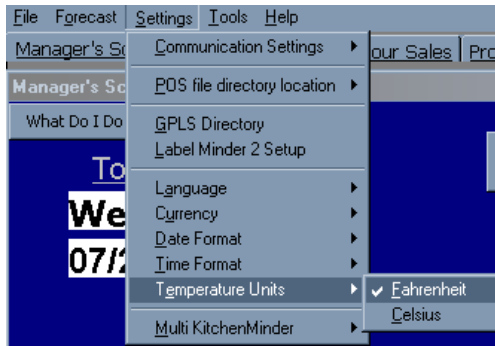
6. Change the Currency to EURO

Click the Settings Tab, then Select Currency to Choose Euro



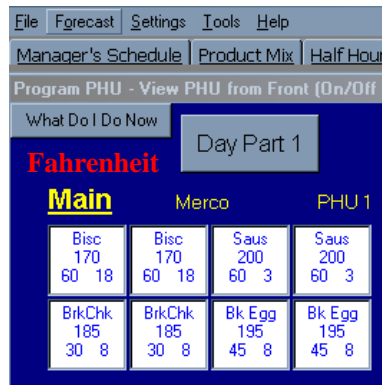
7. Changing Temperature-

Click the Settings Tab, and then select the Temperature Units
From there you can select either Fahrenheit or Celsius.

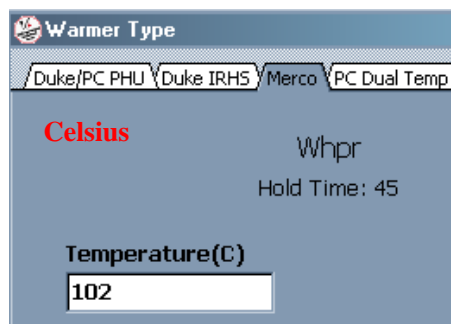
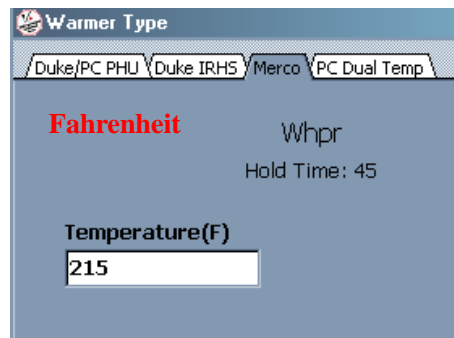
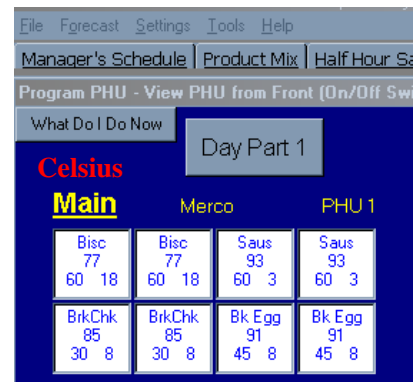


The Temperature Conversions are Completely Accurate.

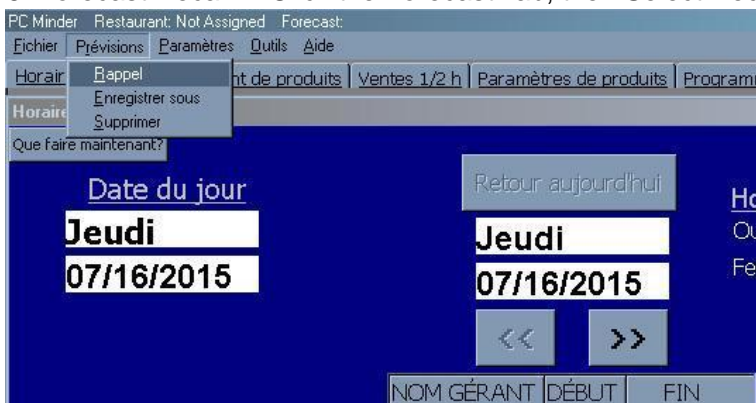
Note: You must Switch back and forth through screens for the Temperature change to see the Temperature units Change.



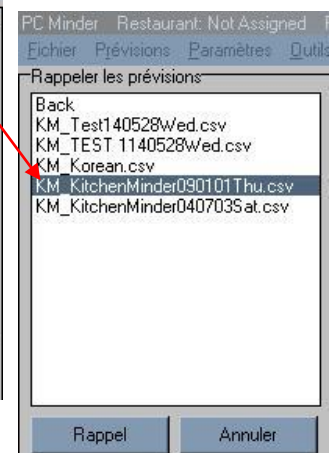
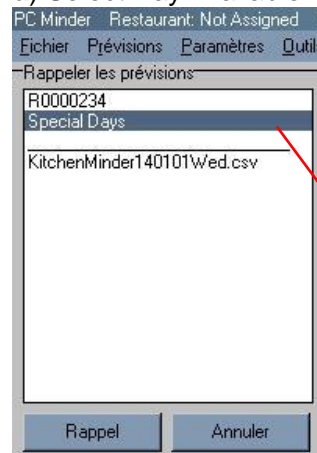
Temperature Conversion from Fahrenheit to Celsius.



8. Forecast Recall- Click the Forecast Tab, then Select Recall.

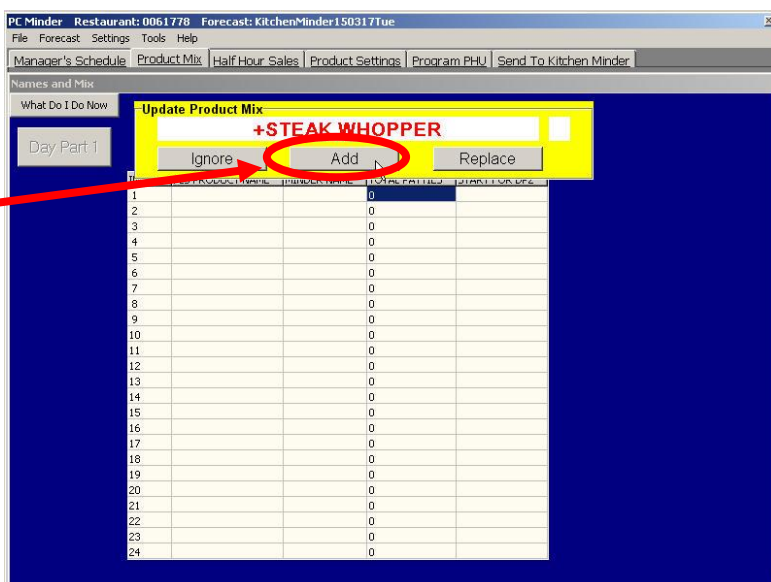


a) Select Day Available

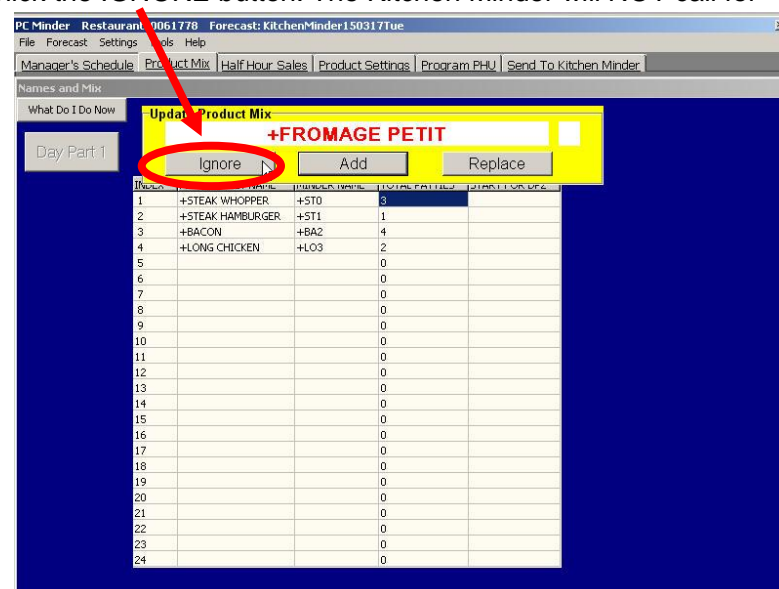


9. Daypart 1 and Daypart 2 Product Mix SetUp

a) For all Products to HOLD in the PHU's, Click the ADD button. The Kitchen Minder will call for these products to cook.

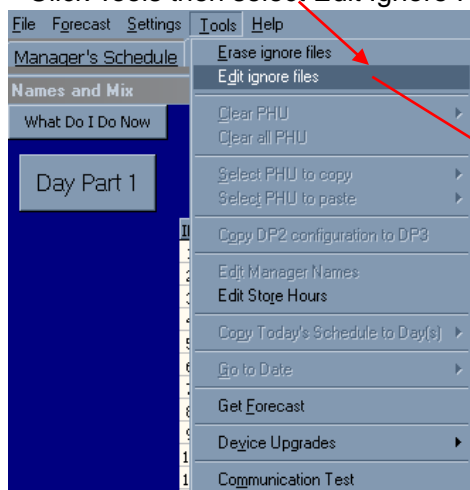


b) For all other Products NOT to HOLD in the PHU's, Click the IGNORE button. The Kitchen Minder will NOT call for these products to cook.

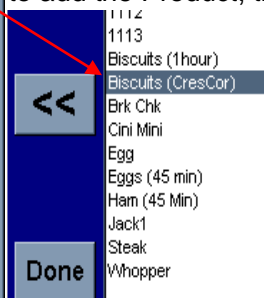


c) If you Ignored a certain product that is needed for a particular Daypart, you can edit the Ignore files and add the Item that you missed.

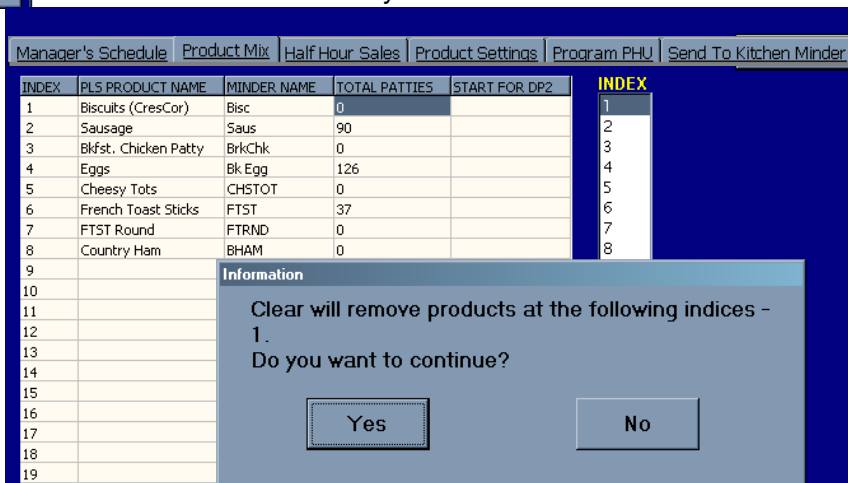
Click Tools then select Edit Ignore Files



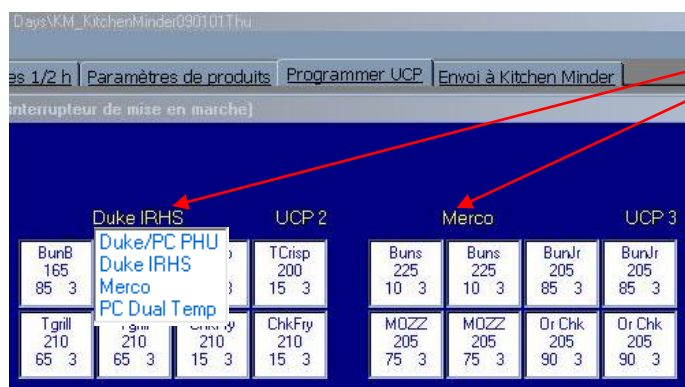
Then Select the Product you wish to add
click the Double arrows
to add the Product, then click done



d) If you need to clear a product from a particular Daypart. Go to the Product Mix Tab & Click the Clear Button. Then select which product you'd like to clear from the Index number listed on the right. Then Click the clear button again to remove that Product. Then Click yes.



12. Program PHU Tab



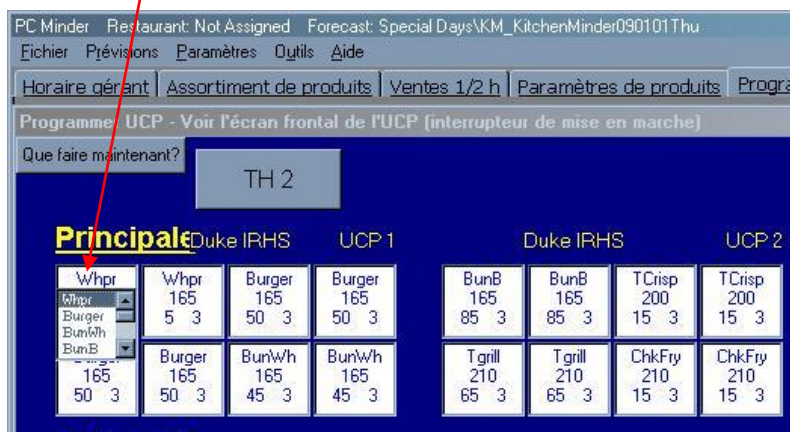
a) Correct PHU Type (in Yellow)

Click to select correct Warmer Type

Otherwise, no Products will be shown.

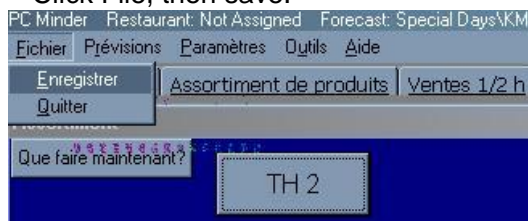
NOTE: You can have different Warmer Types and Products on other PHUs.

b) Assign Products in each pan.



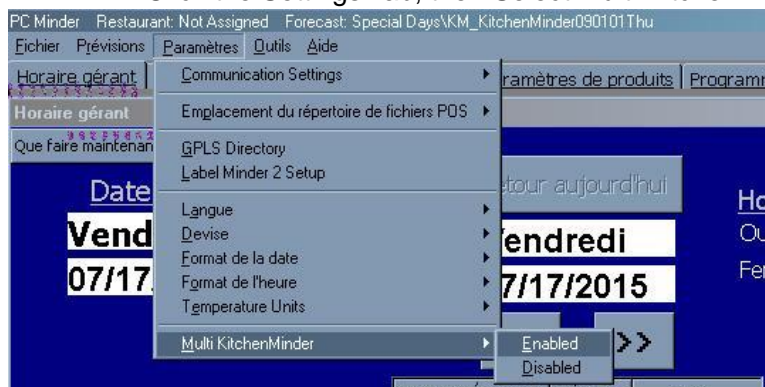
13. Save your Changes

Click File, then save.



14. Change KM to Multi KM

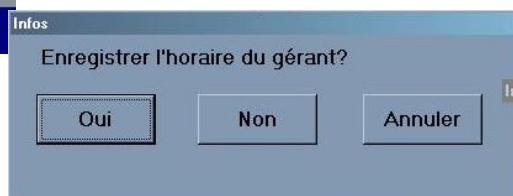
Click the Settings Tab, then Select Multi Kitchen Minder to Enable or Disable.



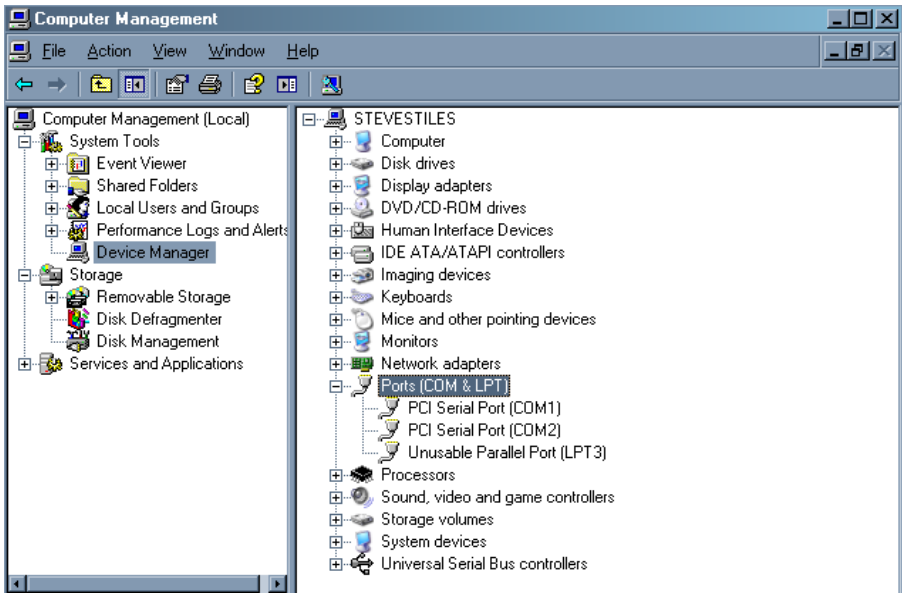
(In order for Changes to take effect you must exit out of PCMinder and Save your Settings, then re-enter PCMinder.)

15. If USB-Serial adapters are installed

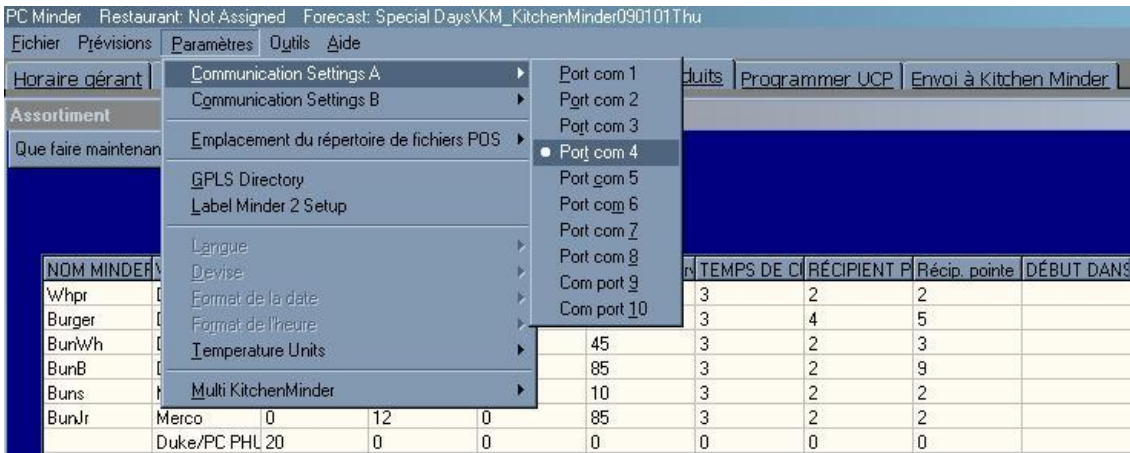
a) Exit PCMinder, Click Save, Yes, the Yes.



b) Check Windows COM Ports in Device Manager.
 Right Click My Computer, Select Manage, then Device Manager.
 Then Select Ports to see what they are set to.



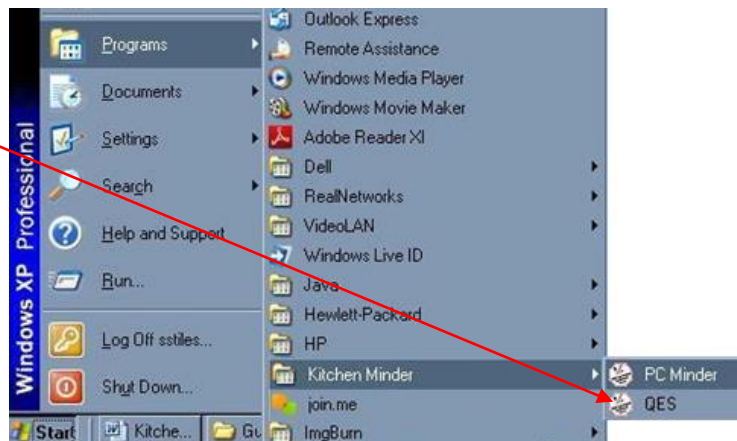
c) Re-enter PCMinder and Assign Com Ports in PCMinder



16. Proceed to Send a Forecast to the Kitchen Minds that you set to the Assigned Com Ports.



17. Assigning a BK# to PCMinder.
Open up QES from the Start Menu.

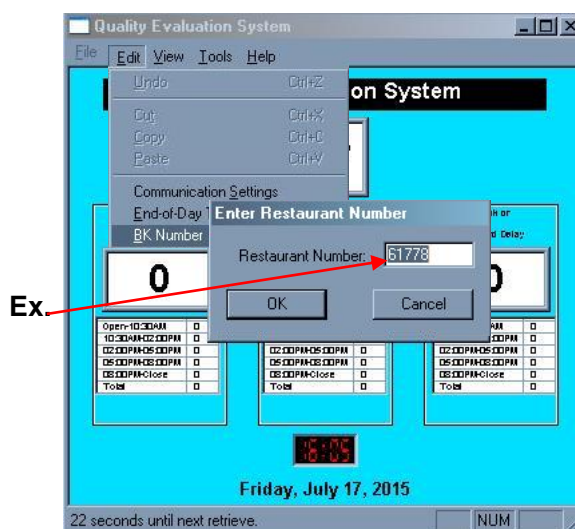


- a) Then Enter the BK#

Enter Restaurant Number

Restaurant Number:

OK Cancel



- b) When you Re-enter
PCMinder, The Restaurant #
Should be Listed on Top of the PCMinder Application.

